

Coast to Coast International

Marine Service

[< Back](#)

[About us](#)

[Member Associations](#)

[Privacy](#)

[Contact Us](#)

Provisions

**Deck & Engine
Ship Spare**

Bonded Stores

Charts & Publication

Laundry Services

**Environmental
Services**

Safety Equipment

Ship Repair/Supplies

**Additional
Ship Services**

Ports of Call



Full Service Ship Supplier

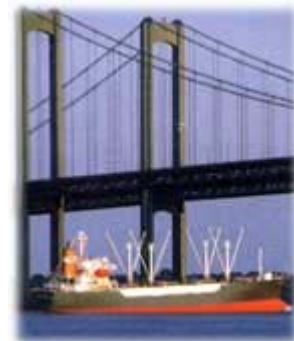
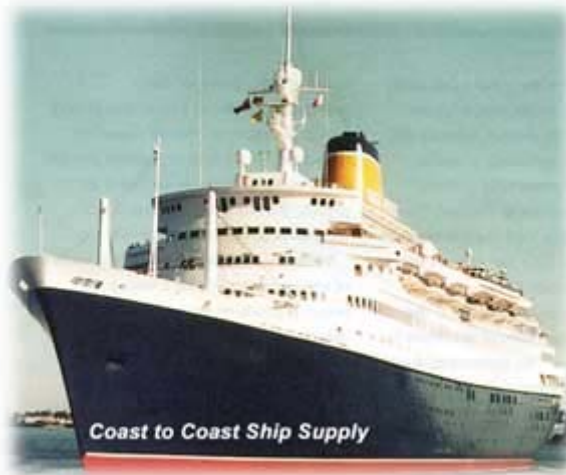
**Coast to Coast International
Marine Service
1314/16 South Howard Street
Philadelphia, PA 19147**

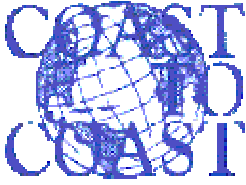


Tel: 215-468-3296 Fax: 215-468-3924

Telex: 149061

24 Hours - 215-768-3661





Coast to Coast International

Marine Service

[< Back](#)[About us](#)[Member Associations](#)[Privacy](#)[Contact Us](#)[Provisions](#)[Deck & Engine
Ship Spare](#)[Bonded Stores](#)[Charts & Publication](#)[Laundry Services](#)[Environmental
Services](#)[Safety Equipment](#)[Ship Repair/Supplies](#)[Additional
Ship Services](#)[Ports of Call](#)

About Coast to Coast

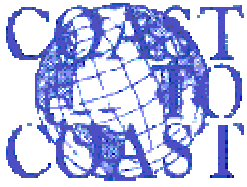
Coast to Coast International Marine Services Ltd. has been developed with the goal of joining together the knowledge of an owner's protective agent with the resources of a ship's services company. The purpose is to provide a valuable service to ship's owners in which they may call upon efficiently fulfill all their vessel's needs prior to and while in port.

In addition to the customary service expected from an owner's protective agent, we take the extra step providing ship owners with a full array of services. The intent is to save the owner costs through providing services "in-house" assuring an efficient operation in which all functions are actually performed by the vessel's agent. There will be only one company to contact and only one invoice to receive, thereby saving the owner time in processing of invoices.

The services will be fulfilled at the pre-established cost set forth in the company tariff. With the pre-established tariff in place, the owner will know what costs to expect rather than having to wait for notification far after the vessel has sailed from the port.

This web site was designed to furnish you with a list of services that Coast to Coast International Marine Service Ltd. will provide to your vessels. We seek to provide a complete service which the following site provides an overview of these primary services available to you. Any further services required, please contact our office via email and we will accommodate.

Our company prides itself in quality service to our customers!



Coast to Coast International

Marine Service

[< Back](#)

[| About us](#)

[| Member Associations](#)

[| Privacy](#)

[| Contact Us](#)

[Provisions](#)

Bonded Stores



[Print Product List - PDF](#)

(Note: This requires Adobe Acrobat Reader)

[Deck & Engine
Ship Spare](#)

[Bonded Stores](#)

[Charts & Publication](#)

[Laundry Services](#)

[Environmental
Services](#)

[Safety Equipment](#)

[Ship Repair/Supplies](#)

[Additional
Ship Services](#)

[Ports of Call](#)

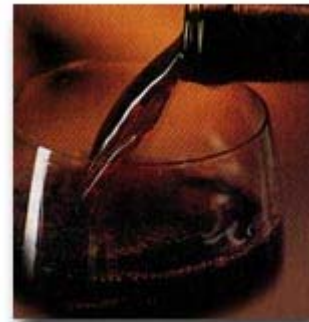
Beers



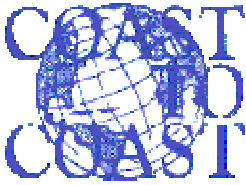
Cigarettes & Cigars



Whisky, Liquors & Brandy Table Wines



What is your pleasure?
Coast to Coast International Marine
Service will provide
for your needs!



Coast to Coast International *Marine Service*

[< Back](#)

[| About us](#)

[| Member Associations](#)

[| Privacy](#)

[| Contact Us](#)

[Provisions](#)

Charts & Publication

[Deck & Engine
Ship Spare](#)

[Bonded Stores](#)

[Charts & Publication](#)

[Laundry Services](#)

[Environmental
Services](#)

[Safety Equipment](#)

[Ship Repair/Supplies](#)

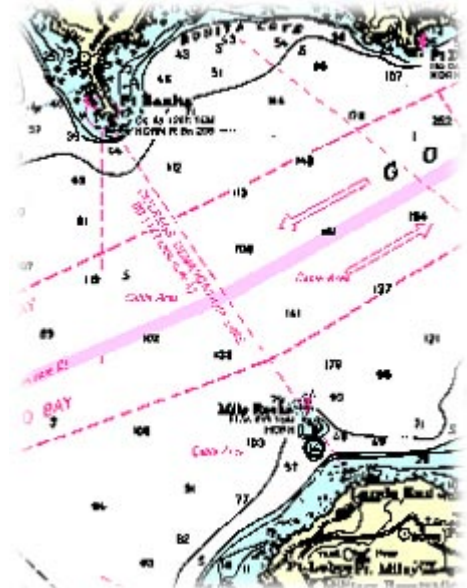
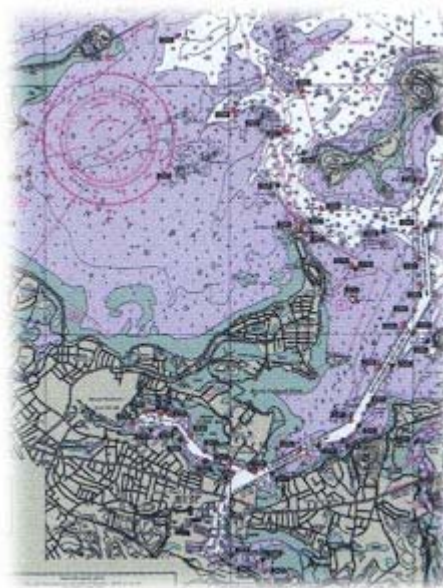
[Additional
Ship Services](#)

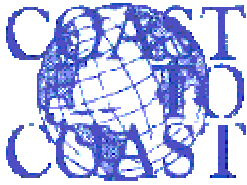
[Ports of Call](#)



Updated British Admiralty and Defense Mapping Agency charts

Publications ordered and delivered





Coast to Coast International

Marine Service

[< Back](#)

[About us](#)

[Member Associations](#)

[Privacy](#)

[Contact Us](#)

Provisions

[Deck & Engine
Ship Spare](#)

[Bonded Stores](#)

[Charts & Publication](#)

[Laundry Services](#)

[Environmental
Services](#)

[Safety Equipment](#)

[Ship Repair/Supplies](#)

[Additional
Ship Services](#)

[Ports of Call](#)

Contact Information



Luigi Adamo

Tel: 215-468-3296

24 Hours - 215-768-3661



Fax: 215-468-3924

Telex: 173095

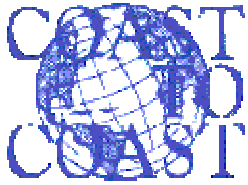


Email Us: info@eshipline.com



Coast to Coast International Marine Service
1314/16 South Howard Street
Philadelphia , PA 19147

[Click on Map for Detail Map](#)



Coast to Coast International

Marine Service

[< Back](#)

[About us](#)

[Member Associations](#)

[Privacy](#)

[Contact Us](#)

[Provisions](#)

Deck & Engine

[Deck & Engine
Ship Spare](#)

[Bonded Stores](#)

[Charts & Publication](#)

[Laundry Services](#)

[Environmental
Services](#)

[Safety Equipment](#)

[Ship Repair/Supplies](#)

[Additional
Ship Services](#)

[Ports of Call](#)

[Cabin Stores Consumables / Supplies](#)

[Spare parts for Deck / Engine](#)



[Machinery & Spare Parts
Bearings, Valves
Pipes, Tubes & Fittings
Instruments](#)



Ship's Spares

Ship's spare part cleared with U.S. Customs.
Bonded Transport and Warehousing for timely efficient deliver
to the vessel.
Warehouse space available for general storage (Up to 1000 sq.
meters available).



Coast to Coast International

Marine Service

[< Back](#)

[About us](#)

[Member Associations](#)

[Privacy](#)

[Contact Us](#)

Provisions

[Deck & Engine
Ship Spare](#)

[Bonded Stores](#)

[Charts & Publication](#)

[Laundry Services](#)

[Environmental
Services](#)

[Safety Equipment](#)

[Ship Repair/Supplies](#)

[Additional
Ship Services](#)

[Ports of Call](#)

Environmental Services



Spills & Tank Cleaning

Garbage Removal (Drum service, smaller quantities)

35 gallon drums provided for smaller quantities of dry garbage on a meter basis

Sludge Removal (via truck or barge)

Removal and disposal of sludge or oily water



Dunnage Removal

Disposal of U.S.D.A. regulated and unregulated dunnage
Certificate of Disposal provided to vessel signed and stamped by U.S.D.A.
clearing the vessel to depart the port
Dumpster Cans 20, 30, 40 - Closed or Open top cans

Services through out the United States and available for all major
passenger ships.

Management and Logistics for Refused Cargoes

For cargoes refused or rejected by any parties involved directly with the cargo
(i.e. shipper, consignee, receiver, vessel charters, etc.) or by U.S. Government
agencies, namely U.S. Customs or U.S. Department of Agriculture



Coast to Coast International

Marine Service

[< Back](#)

[About us](#)

[Member Associations](#)

[Privacy](#)

[Contact Us](#)

[Provisions](#)

Laundry Services

[Deck & Engine
Ship Spare](#)

[Bonded Stores](#)

[Charts & Publication](#)

[Laundry Services](#)

[Environmental
Services](#)

[Safety Equipment](#)

[Ship Repair/Supplies](#)

[Additional
Ship Services](#)

[Ports of Call](#)

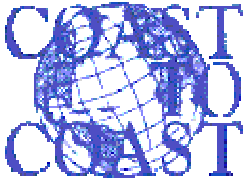
Pick Up & Delivery



Laundry pickup service at vessel



Blankets
Sheets
Bed Spreads
Pillow Cases
Pillows
Towels
Covers
Cutains
Aprons
Shirts
Table Covers
Napkins
Pants
Bags



Coast to Coast International *Marine Service*

[< Back](#)[| About us](#)[| Member Associations](#)[| Privacy](#)[| Contact Us](#)[Provisions](#)[Deck & Engine
Ship Spare](#)[Bonded Stores](#)[Charts & Publication](#)[Laundry Services](#)[Environmental
Services](#)[Safety Equipment](#)[Ship Repair/Supplies](#)[Additional
Ship Services](#)[Ports of Call](#)

Member Associations

International Ship Supply Association National Association Marine Services of the United States

Coast to Coast International Marine Service, Ltd., is a member of the "International Ship Suppliers Association" and the "National Association Marine Services of the United States". Belonging to these associations enables us, through networking with colleagues, to assist vessels anywhere in the world at any time.

I.S.S.A.



The International Ship Suppliers Association (ISSA) is an International Association of National Associations of Ship Suppliers. ISSA was founded in Copenhagen, Denmark in 1955. There are 31 member associations with a total of 1200 members. There are associate members in over 46 countries. Two overall goals of ISSA is to promote contacts and discussions between organizations of ship suppliers

and to establish contacts on an international level with organizations of ship owners.

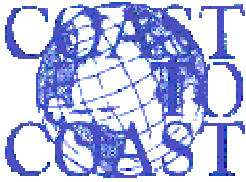
ISSA issues an ISSA register towards the end of each year and circulates it to ISSA members who are listed, ship owners' purchasing departments, chambers of commerce, maritime colleges, and other shipping organizations.

N.A.M.S.



National Association Marine Services of the United States (NAMS) is the only properly-constituted origination of commercial vassal suppliers in the United States. NAMS has been in existence for 45 years and through its executive office, stands ready to assist ship owners and operators in any way. NAMS actively participates as a member of the International Ship Suppliers Association (ISSA). Many of the NAMS members attend the

international convention and, thereby, keep abreast of the trade worldwide. In their 50th Anniversary Year, the 2000-01 edition of the Directory of American Ship Services is only one of a number of valuable services developed to aid the ship supplier customers. NAMS has a significant history and has a well-founded reputation for service. Their directory general listings of ports are consolidated to reflect the largest major port rather than each local port. Also, ports are cross-referenced for your convenience. Members are listed where they have office/warehouse facilities.



Coast to Coast International

Marine Service

Home

About us

Member Associations

Privacy

Contact Us

Provisions

Provision

Deck & Engine
Ship Spare

Bonded Stores

Charts & Publication

Laundry Services

Environmental
Services

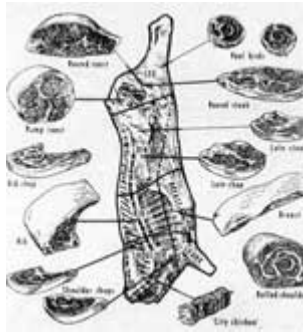
Safety Equipment

Ship Repair/Supplies

Additional
Ship Services

Ports of Call

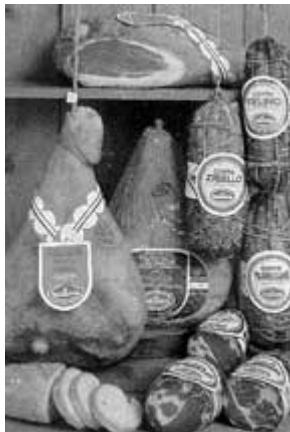
Beef - Lamb - Assorted Luncheon Meats



Pasta for Dinner!



Pork - Ham



Fresh & Frozen Fish



Provisions That Satisfy Your Hunger & Your Nutrition!



Including Your Thirst!

Ports of Call

From Around the World to the United States
Coast to Coast International Marine Service for all your Ships Provisions & Needs

Philadelphia, PA



The Port of Philadelphia and Camden (PPC) is a newly created division of the Delaware River Port Authority, empowered to provide promotional and strategic planning assistance to the region's maritime facilities. Additionally, the Port of Philadelphia and Camden is responsible for regional export development and has a network of international representatives. Located on the upper Delaware River, the Port's facilities include more than forty private and public facilities capable of servicing bulk, breakbulk and containerized cargoes. Additionally, the Port operates a cruise passenger terminal at the former site of the Philadelphia Naval Base and AmeriPort, the region's intermodal transfer facility. The Port has dedicated facilities capable of handling forest products, cocoa beans, automobiles and refrigerated cargoes. Recognition of the importance and economic impact of the Port region has led to continued investments in new terminal facilities, expansion and cargo handling equipment to the benefit of shippers worldwide.

Wilmington, DE



78 years ago, Wilmington, Delaware emerged as an international seaport at the exact location where the Swedish settlers first landed on the Christina River aboard the Kalmar Nyckel, back in 1638. The Port of Wilmington, Delaware is a full-service deepwater port and marine terminal handling over 400 vessels per year with an annual import/export cargo tonnage of 5 million tons. Located at the confluence of the Delaware and Christina Rivers, 65 miles from the Atlantic Ocean, the Port is owned and operated by the Diamond State Port Corporation, a corporate entity of the State of Delaware. Since it was founded in 1923, the Port of Wilmington has been a major Mid-Atlantic import/export gateway for a wide variety of maritime cargoes and trade.

New York, NY



The Port of New York/New Jersey is the largest port complex on the East Coast of North America and is located at the hub of the most concentrated and affluent consumer market in the world, with immediate access to the most extensive interstate highway network in the region. The Port Authority of New York & New Jersey is a bi-state agency formed in 1921 to promote trade and commerce in the entire port region and directly oversees the operation of seven cargo terminals in the New York-New Jersey region. Each terminal offers comprehensive shipping services, a qualified, highly-productive labor force and competitive pricing. Thousands of trucking companies serve the Port of New York/New Jersey providing quality handling and responsive service from pickup to delivery. Our Automated Cargo Expediting System (ACES®) and SEA LINK® Driver Identification Program enhance security and speed cargo processing. Double-stack train service to and from the U.S. Midwest, New England and eastern Canada is provided by CSX and Norfolk Southern with connections to Canadian Pacific Railway. These fast, efficient services are available Monday through Saturday at ExpressRail, our on-dock rail facility. In 1999, the Port of New York/New Jersey handled almost 18 million tons of general cargo including 2.8 million TEUs (20-foot equivalent units).

Baltimore, MD



Founded in 1706 on the banks of the Patapsco River, the Port of Baltimore has grown to become one of the busiest ports on the East Coast of the United States. Originally established to transport farmers' crops along the Eastern seaboard, as well as cargoes to and from international destinations, today the port thrives on diversity. From automobiles to zinc, from Akron to Zhenjiang, the maritime center handles more than 30 million tons annually of all types of cargoes from around the world. One of the Port of Baltimore's greatest advantages is its strategic Mid-Atlantic location- and an inland setting that has made it the closest Atlantic port to major midwestern population and manufacturing centers. In addition to its geographical location, the Port of Baltimore has long maximized its enviable locale by combining on-site, state-of-the-art facilities with efficient connections to points north, south and west. The Port of Baltimore is regarded as one of America's top container terminals, providing technological advances that have transformed port operations from clipboard to keyboard. The port boasts computerized gate complexes, hand held computers and scanners and the use of Electronic Data Inter-change (EDI)- all which greatly increase the port's efficiency and cost-effectiveness.

Norfolk, VA

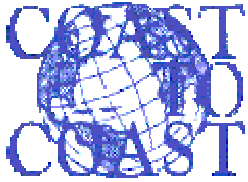


Virginia's strategic mid-Atlantic location and unparalleled transportation infrastructure offer steamship lines and shippers unbeatable access to two-thirds of the U.S. population with more than 75 international shipping lines and one of the most frequent direct sailing schedules of any port. Virginia has the best natural deepwater harbor on the U.S. East Coast. Fifty-foot-deep, unobstructed channels provide easy access and maneuvering room for the largest of today's container ships. Virginia ports are located just 18 miles from the open sea on a year-round, ice-free harbor. Virginia ports have long maintained a reputation for efficient and uncongested intermodal service. The bottom line is in the numbers: The Port of Virginia transports more intermodal containers to more cities faster and more efficiently than any other port in the United States. As the largest intermodal facility on the U.S. East Coast, Virginia offers six direct-service trains to 28 major cities each day. More than 50 motor-carrier companies offer full freight-handling and load-consolidation services. A modern network of interstate and local highways permits fast, direct inland motor-freight transportation to any point in the United States.

Major Ports of Italy With Headquarters in Gioia Tauro



In questa sezione di Portnet Italia sono disponibili informazioni generali sul porto di Gioia Tauro con una dettagliata cartina degli ormeggi; la descrizione dei mezzi e degli impianti in banchina; i servizi ausiliari alla navigazione, come la situazione meteo in rada ed in porto; traffico commerciale con arrivi e partenze delle navi in ordine cronologico e per destinazione; turismo e diporto, dislocazione e disponibilità dei posti barca. Eventuali operatori non compresi negli elenchi sono pregati di comunicarlo.



Coast to Coast International

Marine Service

[Home](#)[About us](#)[Member Associations](#)[Privacy](#)[Contact Us](#)[Provisions](#)[Deck & Engine
Ship Spare](#)[Bonded Stores](#)[Charts & Publication](#)[Laundry Services](#)[Environmental
Services](#)[Safety Equipment](#)[Ship Repair/Supplies](#)[Additional
Ship Services](#)[Ports of Call](#)

Privacy Policy

Information Collection and Use

Coast to Coast is the sole owner of the information collected on this site. We will not sell, share, or rent this information to others in ways different from what is disclosed in this statement. Coast to Coast collects information from the users at several different points on the website.

Order & Information

We request information from the user on our order form. Here a user must provide contact information such as name, phone number, email address, and shipping address. This information is used for billing purposes and to fill customer's orders. If we have trouble processing an order, this contact information is used to get in touch with the user. When placing an order, your information is used for the following:

- Delivery information for the product
- Contact regarding order status
- Generating anonymous demographics

Log Files

We use IP addresses to analyze trends, administer the site, track user's movement, and gather broad demographic information for aggregate use. IP addresses are not linked to personally identifiable information.

Links

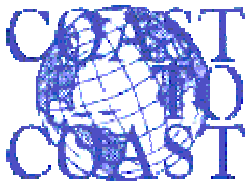
This web site contains links to other sites. Please be aware that we, Coast to Coast is not responsible for the privacy practices of such other sites. We encourage our users to be aware when they leave our site and to read the privacy statements of each and every web site that collects personally identifiable information. This privacy statement applies solely to information collected by this Web site.

Correction/Updating Personal Information:

If a user's personally identifiable information changes (such as your zip code or phone number), or if a user no longer desires our service, we will endeavor to provide a way to correct, update or remove that user's personal data provided to us. This can usually be done at the member information page.

Notification of Changes

If we decide to change our privacy policy, we will post those changes on our Homepage so our users are always aware of what information we collect, how we use it, and under circumstances, if any, we disclose it. If at any point we decide to use personally identifiable information in a manner different from that stated at the time it was collected, we will notify users by way of an email. Users will have a choice as to whether or not we use their information in this different manner. We will use information in accordance with the privacy policy under which the information was collected.



Coast to Coast International

Marine Service

Home | About us | Member Associations | Privacy | Contact Us

Provisions

Deck & Engine
Ship Spare

Bonded Stores

Charts & Publication

Laundry Services

Environmental
Services

Safety Equipment

Ship Repair/Supplies

Additional
Ship Services

Ports of Call

Safety & Fire Fighting Equipment

Liferaft Inspections and Sales

Inspections performed by certified "in-house" specialist



Life Boats and Jackets
for your safety at sea!

THINK SAFE

BE SAFE

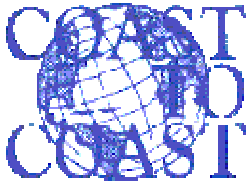


Protective Fire Fighting
Equipment



Protective Industrial
Equipment





Coast to Coast International

Marine Service

[Home](#)

[About us](#)

[Member Associations](#)

[Privacy](#)

[Contact Us](#)

Provisions

Deck & Engine
Ship Spare

Bonded Stores

Charts & Publication

Laundry Services

Environmental
Services

Safety Equipment

Ship Repair/Supplies

Additional
Ship Services

Ports of Call

Ship Repair Services/Supplies



Beware of Faulty Repairs!

For all repairs and supplies we use only the BEST QUALITY parts and accessories to keep you safe!

Steel fabrications

Metal Sheets and Bars/Supplies

Machine shop services

Motor repairs and rewinding

Equipment repairs

Pipe & Tube Fittings/Supplies

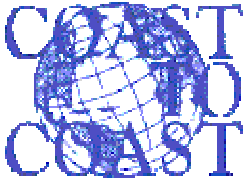
Piping systems

- installation, modifications, and repairs (threaded or welded)

Pump installations and repairs

Rigging/Supplies

Welding/Supplies



Coast to Coast International

Marine Service

Provisions

Deck & Engine
Ship Spare

Bonded Stores

Charts & Publication

Laundry Services

Environmental
Services

Safety Equipment

Ship Repair/Supplies

Additional
Ship Services

Ports of Call



MAIL
[Email Us](#)

Additional Ship Services



Crew Services

Crew Transportation

- Pickup crew at the airport, transport them directly to the vessel or to hotel accommodations.
- Clear crew with U.S. Immigration and Custom Services for departing crew.
- Transport departing crew to airport.
- General transportation provided for crew to doctors, shopping, etc.

Medical / Doctors visits

- For non-emergency/routine medical attention, doctors call the vessel direct minimizing transportation costs.
- Immunizations and vaccinations provided on board.
- Drug/alcohol testing performed by certified testing laboratory staff.

Cash to Master Delivery

- Receipt and bonded delivery of cash to master to vessel.

Notary Public

- Notarizing of sea protests or other documents requiring this service.

Cellular Telephone Service

- Cellular telephones with \$50.00 prepaid phone cards.
Representatives/superintendent. Pre-paid telephone cards are offered.

Certificates

Authorized and approved party to provide

- Hot Work Permits
- Gas Free Certificates

Fresh Water

Delivered via barge

Security Service

Regulated by United States Coast Guard & Immigration & Naturalization Services